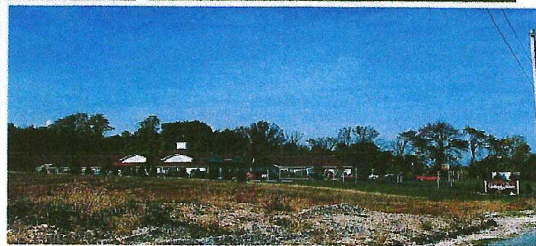
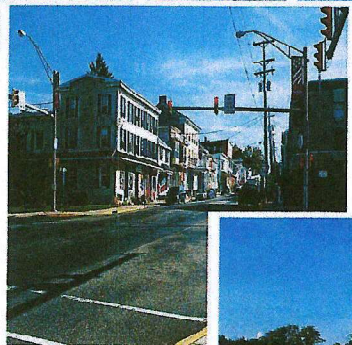
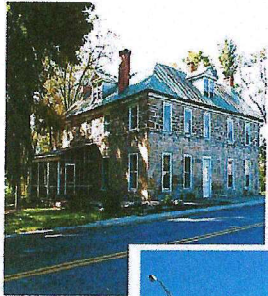


The Northern York County Region Comprehensive Plan



**Policy and
Action Plan**

January 2005

Northern York County Region Comprehensive Plan Transportation Amendment

Adopted by Franklinton Borough Council resolution - October 6th, 2010

Richard Blouch
Tony Vasco
Alan Rosenberger
Sharon Blouch
Rodney Stein
Benjamin Shea
Douglas Isenberg
James Adams, Mayor

Adopted by Dillsburg Borough Council resolution – October 12th, 2010

Jeff Griffin
Hal Anderson
David Baldwin
John Richardson
Matt Fawber
Henry Snyder, Mayor

Adopted by Franklin Township Board of Supervisors resolution – October 13th, 2010

Donald Lerew
John Shambaugh
Naomi Decker
Gary Brown
Edward Campbell

Adopted by Carroll Township Board of Supervisors resolution – November 8th, 2010

Nancy Livingston
Paul Walters
William Turner
Mark McCurdy
Bruce Trostle

These actions amend the Northern York County Region Comprehensive Plan, dated September 2004 and amended in January 2008, to include the Transportation Amendment dated November 2010 as an addition to the Northern York County Region Comprehensive Plan. The Transportation Amendment and Appendices are separate documents.

Northern York County Region Comprehensive Plan

Adopted by Carroll Township Board of Supervisors resolution - September 21,
2004

Calvin E. Hlpp
Jeffrey T. Murphy
Jere E. Rutherford
Robert L. Schopfer
Kevin A. Zinn

Adopted by the Dillsburg Borough Council resolution -- September 14, 2004

Hal Anderson
David Baldwin
Jeff Griffin
Nancy Grove Nichols
Mark Ryder
Mike Whitzel
Kathryn Zeiders
Darwin Moyer, Mayor

Adopted by Franklin Township Board of Supervisors resolution -- November 18,
2004

Edward Balsavage
Naomi Decker
Larry Lambert
Don Lerew
John Shambaugh

Adopted by Franklintown Borough Council Resolution-- February 2, 2005

Richard Blouch
Sharon Blouch
Lorraine McGee
Dennis Palmer
Leon Rudy
David Trump
Katrina Zies

Robert Wolfe, Mayor

Action taken by Monaghan Township Board of Supervisors to not adopt the plan
on November 8, 2004 -- Monaghan Township Year 2000 Comprehensive Plan
supercedes any information in this Plan regarding the Township.

TABLE OF CONTENTS

	Page
Introduction	i
The Planning Process	1
The Vision and Statements of Community Goals and Objectives	2
Policy and Action Plan	12
Statement of the Relationship Between Planning Elements	13
Statement of the Relationship to Contiguous Municipalities and the County	13
Growth Management Initiative	Growth Management Initiative - 1
Growth Area and Rural Resource Area Delineation	Growth Management Initiative - 1
Multi-Municipal Future Land Use Scenario	Growth Management Initiative - 5
Multi-Municipal Land Use Regulatory Approach	Growth Management Initiative - 12
Homeowners Improvement and Assistance Program	Growth Management Initiative - 14
Design Features and Guidelines	Growth Management Initiative - 14
Northern Region Official Map	Growth Management Initiative - 23
Action Plan	Growth Management Initiative - Action Plan - 1
Transportation and Utilities Initiative	Transportation Initiative - 1
Roadway Standards Program	Transportation Initiative - 3
Access Management Standards	Transportation Initiative - 5
Roadway Network Maintenance / Improvement Program	Transportation Initiative - 5
Alternative Transportation Development	Transportation Initiative - 7
U.S. Route 15 Corridor Improvements	Transportation Initiative - 8
Action Plan	Transportation Initiative - Action Plan - 1
Environmental and Natural Resources	
Protection Initiative	Environmental & Natural Resource Protection Initiative - 1
Crafting a Watershed Management Plan	Environmental & Natural Resource Protection Initiative - 1
Environmental Site Planning	
Standards	Environmental & Natural Resource Protection Initiative - 6
Stormwater Best Management Practices (BMP) Program	Environmental & Natural Resource Protection Initiative - 8
Agricultural Preservation / Forestry Conservation Program	Environmental & Natural Resource Protection Initiative - 18
Environmental Education Opportunities Program	Environmental & Natural Resource Protection Initiative - 20
Action Plan	Environmental & Natural Resource Protection Initiative - Action Plan - 1

TABLE OF CONTENTS (continued)



Page	
Economic Development Initiative	Economic Development Initiative – 1
Dillsburg Redevelopment Area as a Component of the	
Comprehensive Plan	Economic Development Initiative – 1
Dillsburg Revitalization Program	Economic Development Initiative – 2
Regional Business Development Program	Economic Development Initiative – 6
Workforce Development Program	Economic Development Initiative – 9
Action Plan	Economic Development Initiative – Action Plan – 1
Historic Preservation Initiative	Historic Preservation Initiative – 1
Local Heritage Management Action Plan as a part of the Lancaster-York	
Heritage Region	Historic Preservation Initiative – 1
Historic Preservation Program	Historic Preservation Initiative – 5
Action Plan	Historic Preservation Initiative – Action Plan – 1
Community Services and Facilities Initiative	Community Services & Facilities Initiative – 1
Comprehensive Regional Recreation	
Program	Community Services & Facilities Initiative – 1
Older Adults Services Program	Community Services & Facilities Initiative – 3
Volunteer Outreach Program	Community Services & Facilities Initiative – 4
Intergovernmental / Services Communications	
Program	Community Services & Facilities Initiative – 4
Dillsburg Area Public Library Strategic	
Plan	Community Services & Facilities Initiative – 6
Regional Newsletter	Community Services & Facilities Initiative – 7
Northern Region Website	Community Services & Facilities Initiative – 8
Action Plan	Community Services & Facilities Initiative – Action Plan – 1
Implementation	Implementation Plan – 1
Implementation Schedule	Implementation Schedule – 1
Appendix 1 - Multi-Municipal Land Use Regulatory Approach Enabling Sections from the Pennsylvania Municipalities Planning Code	

**Northern York
Regional Comprehensive Plan**




Map 1

Future Land Use

LEGEND

-  Rural Conservation
-  Rural Residential
-  Low Density Residential
-  Medium Density Residential
-  High Density Residential
-  Village
-  Mixed Use
-  Highway Commercial
-  Industrial
-  Public

Streets

-  Roads
-  Major Roads
-  Route 15

-  Proposed Interchange Location
-  Primary Growth Area
-  Secondary Growth Area
-  Future Growth Area
-  Village Center



Not to Scale

Project file: c:_northern york\special\places.apr\Future Land Use Map_1

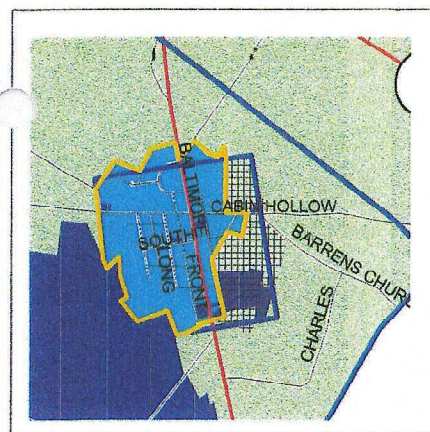
CPC
Community Planning
Consultants, Inc.

August, 2002

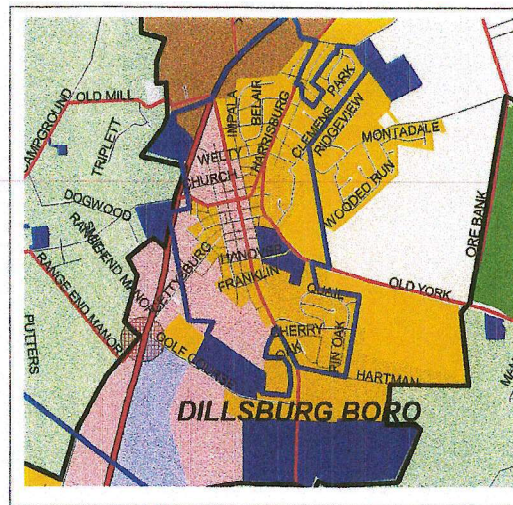
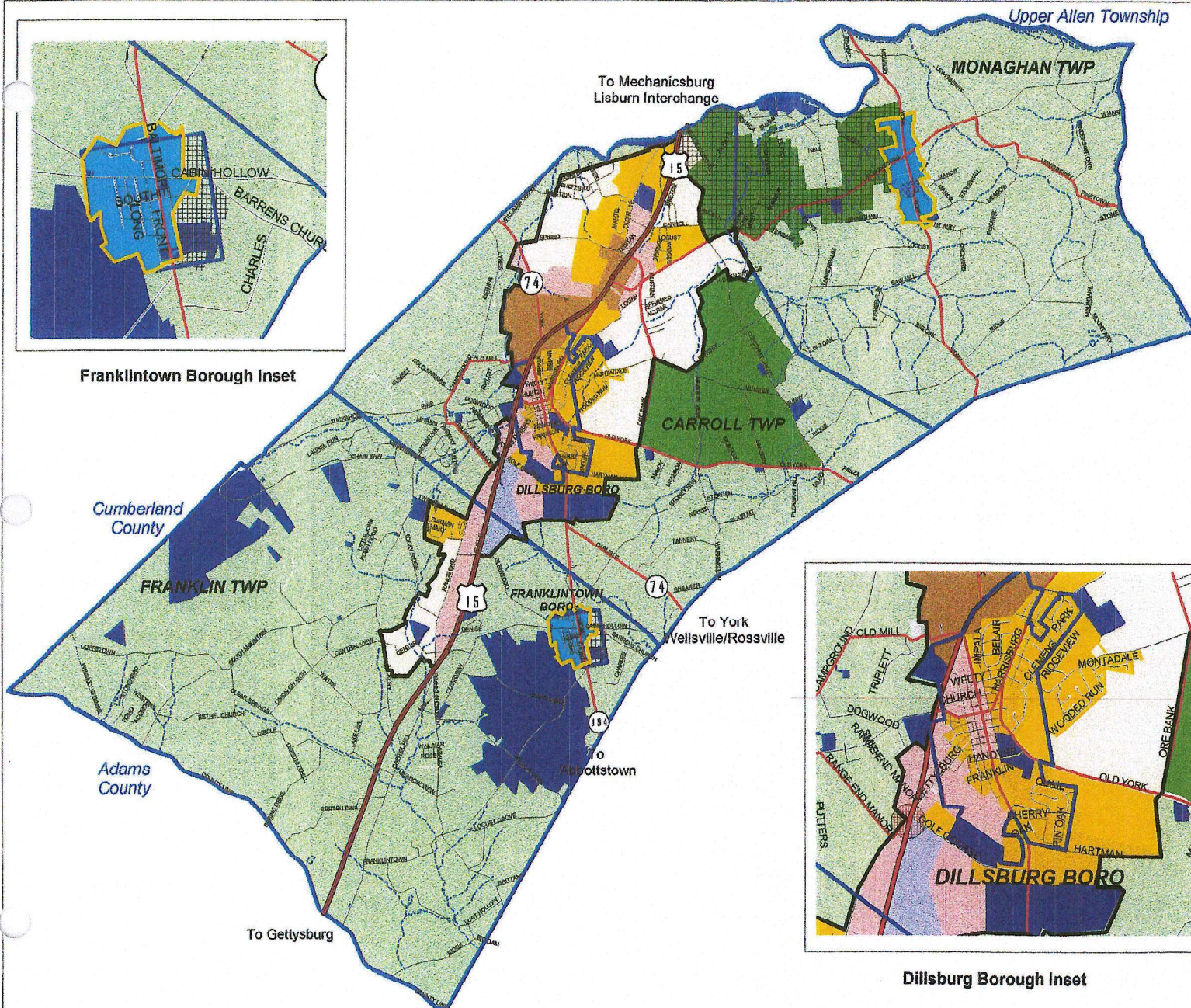
Revised: 8/03

Revised: 6/04

Revised: 8/04



Franklintown Borough Inset



Dillsburg Borough Inset